

# Protected Learning Time Event: Information Resources

## Ophthalmology

### Conjunctivitis

<http://cks.nice.org.uk/conjunctivitis-allergic#specialityTab>  
<http://cks.nice.org.uk/conjunctivitis-infective#specialityTab>

### Red Eye

<http://cks.nice.org.uk/red-eye#specialityTab>

### Corneal Superficial Injury

<http://cks.nice.org.uk/corneal-superficial-injury#specialityTab>

### Blepharitis

<http://cks.nice.org.uk/blepharitis#specialityTab>

### Dry Eye Syndrome

<http://cks.nice.org.uk/dry-eye-syndrome#specialityTab>

### Royal College of Ophthalmologists: Clinical Guidelines

<http://www.rcophth.ac.uk/page.asp?section=451&sectionTitle=Clinical+Guidelines>

### NICE guidelines: Eyes

<http://www.nice.org.uk/guidance/index.jsp?action=byTopic&o=7247#/search/?reload>

## Paediatric Orthopaedic Top Tips

**The Management of Acute Bone and Joint Infection in Childhood: A Guide to Good Practice** - British Society for Children's Orthopaedic Surgery  
[http://bscos.org.uk/resources/Downloads/childrensinfection\\_1.pdf](http://bscos.org.uk/resources/Downloads/childrensinfection_1.pdf)

**Children's Orthopaedics and Fracture Care** - British Society for Children's Orthopaedic Surgery  
<http://bscos.org.uk/resources/Downloads/bluebookchildren.pdf>

## Gastroenterology Referrals / Over 80's Admission Audit

### Referral criteria for upper GI endoscopy, NICE

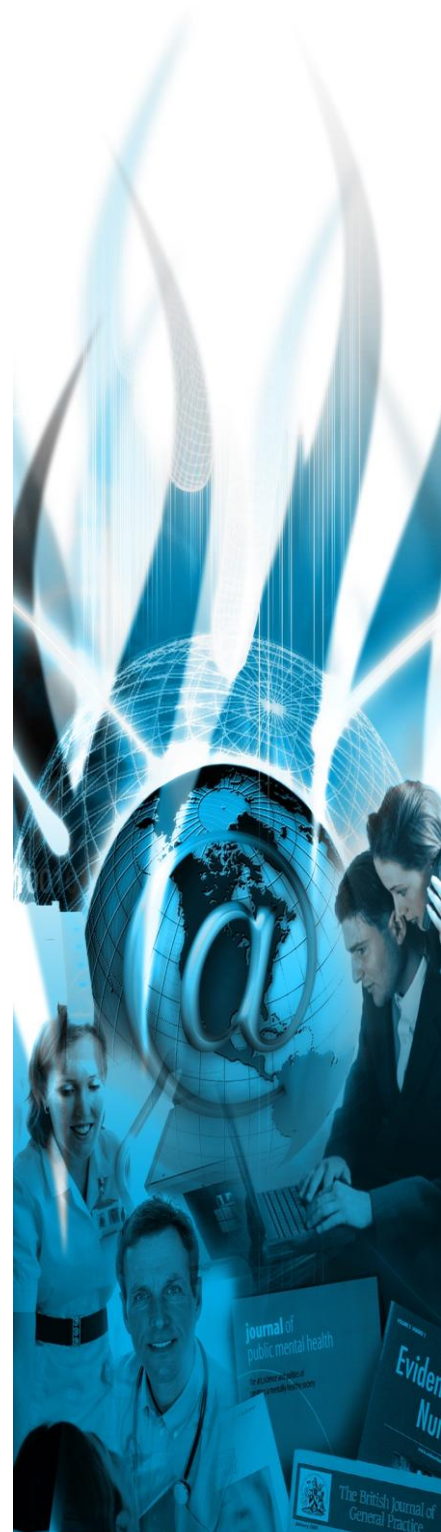
[http://www.nice.org.uk/usingguidance/commissioningguides/uppergiendoscopyservices/referral\\_criteria.jsp](http://www.nice.org.uk/usingguidance/commissioningguides/uppergiendoscopyservices/referral_criteria.jsp)

### Referral for suspected cancer

<http://www.nice.org.uk/cg027>

### Avoiding hospital admissions – what does the research evidence say?

<http://www.kingsfund.org.uk/sites/files/ki/Avoiding-Hospital-Admissions-Sarah-Purdy-December2010.pdf>



## Dermatology: Actinic Keratoses

### Guidelines for the management of Actinic Keratoses

British Association of Dermatologists

[http://www.bad.org.uk/Portals/\\_Bad/Guidelines/Clinical%20Guidelines/Actinic%20Keratoses.pdf](http://www.bad.org.uk/Portals/_Bad/Guidelines/Clinical%20Guidelines/Actinic%20Keratoses.pdf)

### Actinic Keratoses

Primary Care Dermatology Society

<http://www.pcids.org.uk/clinical-guidance/actinic-keratosis-syn.-solar-keratosis>

## Palliative Care

### Liverpool Care Pathway – Version 13, January 2012

<http://insite/WorkArea/DownloadAsset.aspx?id=13358>

### Gold Standards Framework in End of Life Care

<http://www.goldstandardsframework.org.uk/>

### End of Life Care for Adults, NICE

<http://guidance.nice.org.uk/QS13>

### Matters of life and death – helping people to live well until they die

RCGP, 2012

[http://www.rcgp.org.uk/clinical-and-research/clinical-resources/~/\\_media/Files/CIRC/Matters%20of%20Life%20and%20Death%20FINAL.ashx](http://www.rcgp.org.uk/clinical-and-research/clinical-resources/~/_media/Files/CIRC/Matters%20of%20Life%20and%20Death%20FINAL.ashx)

## Library & Knowledge Service

### Clinical Question & Answer Service

The Library & Knowledge Service offer an enhanced enquiry and literature service to all GPs in Rotherham. The service:-

- provides GPs with an answer to their clinical questions using the best available evidence
- searches, appraises and briefly summarises the evidence
- offers enhanced turnaround times allowing GPs to specify a deadline.  
*\*The minimum turnaround time is 6 hours*

Please e-mail the details of your clinical question to

[knowledge.service@rothgen.nhs.uk](mailto:knowledge.service@rothgen.nhs.uk) or telephone 01709 302096

If you would like copies of any of the documents listed in this bulletin or further information on any of the topics covered please contact:

Library & Knowledge Service

The Rotherham Foundation Trust

Oak House

Tel: 01709 302096

E-mail: [knowledge.service@rothgen.nhs.uk](mailto:knowledge.service@rothgen.nhs.uk)

Web: <http://www.rotherhamhospital.nhs.uk/lks>

