

# Protected Learning Time Event: Information Resources

May 2016: Dermatology & Medicines Management

## Update on Skin Cancer

Skin cancers - recognition and referral

<http://cks.nice.org.uk/skin-cancers-recognition-and-referral>

Skin Cancer: NICE pathway

<http://pathways.nice.org.uk/pathways/skin-cancer>

Suspected cancer: recognition and referral. See 1.7 Skin cancers

<https://www.nice.org.uk/guidance/NG12/chapter/1-Recommendations-organised-by-site-of-cancer#skin-cancers>

Skin Cancer Hub

[http://www.ncin.org.uk/cancer\\_type\\_and\\_topic\\_specific\\_work/cancer\\_type\\_specific\\_work/skin\\_cancer/skin\\_cancer\\_hub/](http://www.ncin.org.uk/cancer_type_and_topic_specific_work/cancer_type_specific_work/skin_cancer/skin_cancer_hub/)

## 'Red legs'

Stasis Dermatitis

<https://nationaleczema.org/eczema/types-of-eczema/stasis-dermatitis/>

Developing a nurse led integrated 'red legs' service - caring for people with a complex diagnosis/condition with causes other than acute cellulitis

<http://www.fons.org/Resources/Documents/Project%20Reports/Integrated-Red-Legs-Service-Final.pdf>

Diagnosis and management of cellulitis

<http://www.bmj.com/content/345/bmj.e4955>

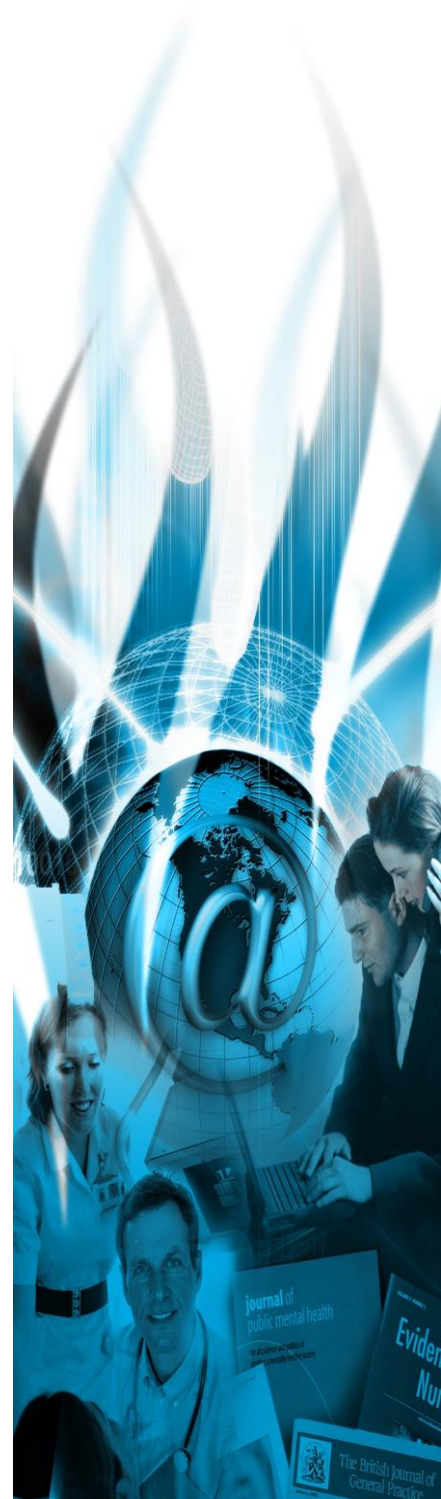
Differentiating between red legs and cellulitis and reviewing treatment options.

<http://www.ncbi.nlm.nih.gov/pubmed/26418399>

Developing a nurse-led integrated 'red legs' service.

<http://www.ncbi.nlm.nih.gov/pubmed/24800322>

Library &  
Knowledge  
Service



## Management of COPD

Chronic obstructive pulmonary disease in over 16s: diagnosis and management

<https://www.nice.org.uk/guidance/cg101>

Global Strategy for the Diagnosis, Management and Prevention of COPD, Global Initiative for Chronic Obstructive Lung Disease (GOLD)

<http://goldcopd.org/global-strategy-diagnosis-management-prevention-copd-2016/>

Pocket Guide to COPD Diagnosis, Management, and Prevention – 2016

<http://goldcopd.org/pocket-guide-copd-diagnosis-management-prevention-2016/>

## Type 2 Diabetes Update

Evidence-based insulin prescribing in type 2 diabetes

<https://www.nice.org.uk/sharedlearning/evidence-based-insulin-prescribing-in-type-2-diabetes>

Self-blood glucose monitoring in diabetes mellitus

<http://www.uptodate.com/contents/self-blood-glucose-monitoring-in-diabetes-mellitus-beyond-the-basics>

Self monitoring of blood glucose (SMBG) for adults with Type 2 diabetes.

<https://www.diabetes.org.uk/Documents/Position%20statements/Diabetes-UK-position-statement-SMBG-Type2-0413.pdf>

Trends in incidence, prevalence and prescribing in type 2 diabetes mellitus between 2000 and 2013 in primary care: a retrospective cohort study.

<http://bmjopen.bmj.com/content/6/1/e010210.full.pdf+html>

If you would like copies of any of the documents listed in this bulletin or further information on any of the topics covered please contact:

Library & Knowledge Service

The Rotherham Foundation Trust

Oak House

Tel: 01709 422096

E-mail: [knowledge.service@rothgen.nhs.uk](mailto:knowledge.service@rothgen.nhs.uk)

Web: <http://www.trftlibraryknowledge.com/>

This bulletin and others produced by TRFT Library and Knowledge Service can be viewed online at

<http://www.trftlibraryknowledge.com/bulletins--blogs.html>

Library &  
Knowledge  
Service

