

Protected Learning Time Event: Information Resources

Pain Management / NSAIDS

Analgesia - mild-to-moderate pain:

<http://cks.nice.org.uk/analgesia-mild-to-moderate-pain>

Pain Assessment & Management Pathways:

<http://bps.mapofmedicine.com/evidence/bps/index.html>

Pain - initial assessment and early management:

http://bps.mapofmedicine.com/evidence/bps/initial_assessment_and_early_management_of_pain1.html

The British Pain Society:

<http://www.britishpainsociety.org/index.htm>

NSAIDs and adverse effects:

<http://www.medicine.ox.ac.uk/bandolier/booth/painpag/nsae/nsae.html>

New drugs in Diabetes

NHS Evidence:

Diabetes Type 1: Medicines

<https://www.evidence.nhs.uk/topic/diabetes-type-1?om=%5B%7B%22itn%22%3A%5B%22%20drug%20%2F%20medicines%20management%20%22%5D%7D%5D>

Diabetes Type 2: Medicines

<https://www.evidence.nhs.uk/topic/diabetes-type-2?om=%5B%7B%22itn%22%3A%5B%22%20drug%20%2F%20medicines%20management%20%22%5D%7D%5D>

Antimicrobial Prescribing Issues

Management of infection guidance for primary care for consultation & local adaptation:

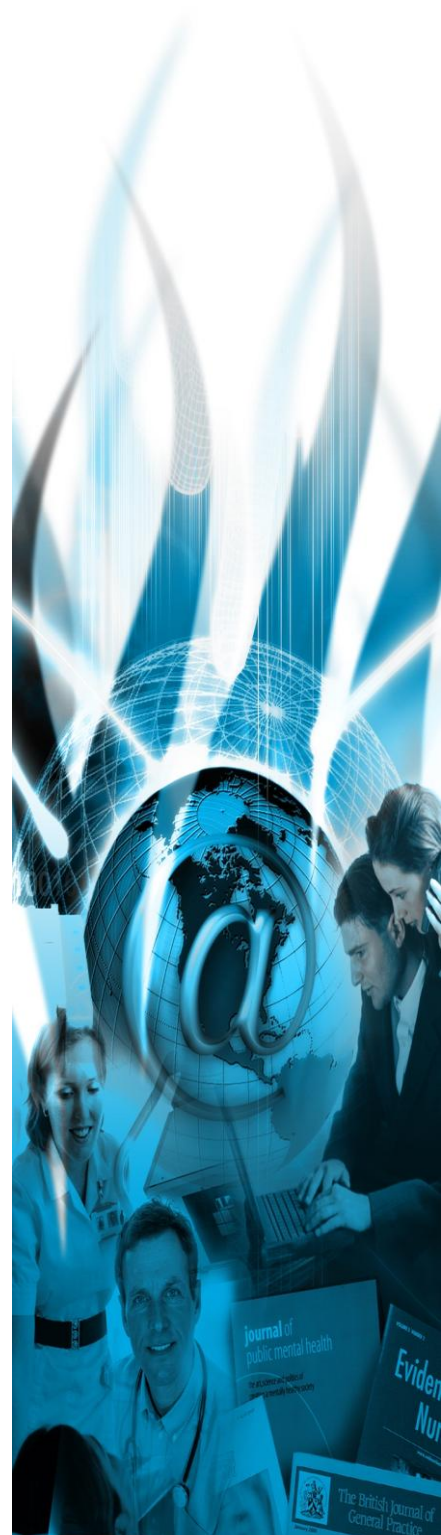
http://www.hpa.org.uk/webc/HPAwebFile/HPAweb_C/1194947333801

Antimicrobial Policy for Adults:

<http://www.southwestyorkshire.nhs.uk/documents/982.pdf>

Prevention and control of healthcare-associated infections:

<http://www.nice.org.uk/nicemedia/live/13763/59578/59578.pdf>



The role of primary care in managing and preventing subsequent episodes of clostridium difficile related diarrhoea

Antibiotic treatment for Clostridium difficile-associated diarrhea in adults:
<http://onlinelibrary.wiley.com/doi/10.1002/14651858.CD004610.pub3/pdf>

Clostridium difficile:
<http://www.mapofmedicine.com/mapinnhs/mapinnhs>

Clostridium difficile:
<http://www.hpa.org.uk/Topics/InfectiousDiseases/InfectionsAZ/ClostridiumDifficile/>

Clostridium difficile infection: how to deal with the problem:
http://www.hpa.org.uk/webc/HPAwebFile/HPAweb_C/1232006607827

Practice Nurse Forum

Compassion in practice : nursing, midwifery and care staff - our vision and strategy:
<http://www.england.nhs.uk/wp-content/uploads/2012/12/compassion-in-practice.pdf>

Practice Nursing:
<http://www.practicenursing.co.uk/>
<http://www.practicenursing.com/>

If you would like copies of any of the documents listed in this bulletin or further information on any of the topics covered please contact:

Library & Knowledge Service
The Rotherham Foundation Trust
Oak House
Tel: 01709 302096
E-mail: knowledge.service@rothgen.nhs.uk
Web: <http://www.therotherhamft.nhs.uk/KnowledgeServiceOakHouse>

