

Protected Learning Time Event: Information Resources

Contraception, Conditions, Pathways & Community

Contraception - assessment

<http://cks.nice.org.uk/contraception-assessment#!topicssummary>

Contraception - barrier methods and spermicides

<http://cks.nice.org.uk/contraception-barrier-methods-and-spermicides#!topicssummary>

Contraception - emergency

<http://cks.nice.org.uk/contraception-emergency#!topicssummary>

Contraception - combined hormonal methods

<http://cks.nice.org.uk/contraception-combined-hormonal-methods#!topicssummary>

Contraception - IUS/IUD

<http://cks.nice.org.uk/contraception-iusiud#!topicssummary>

Contraception - natural family planning

<http://cks.nice.org.uk/contraception-natural-family-planning#!topicssummary>

Contraception - progestogen-only methods

<http://cks.nice.org.uk/contraception-progestogen-only-methods#!topicssummary>

Contraception – sterilization

<http://cks.nice.org.uk/contraception-sterilization#!topicssummary>

Methods of contraception – Map of Medicine

<http://app.mapofmedicine.com/mom/58/page.html?department-id=2&specialty-id=1004&pathway-id=14799&page-id=14800&history=clear>

Long-acting reversible contraception overview

<http://pathways.nice.org.uk/pathways/long-acting-reversible-contraception>

What is the actual cost of providing the intrauterine system for contraception in a UK community sexual and reproductive health setting?

<http://jfprhc.bmj.com/content/early/2013/04/26/jfprhc-2012-100377.short>

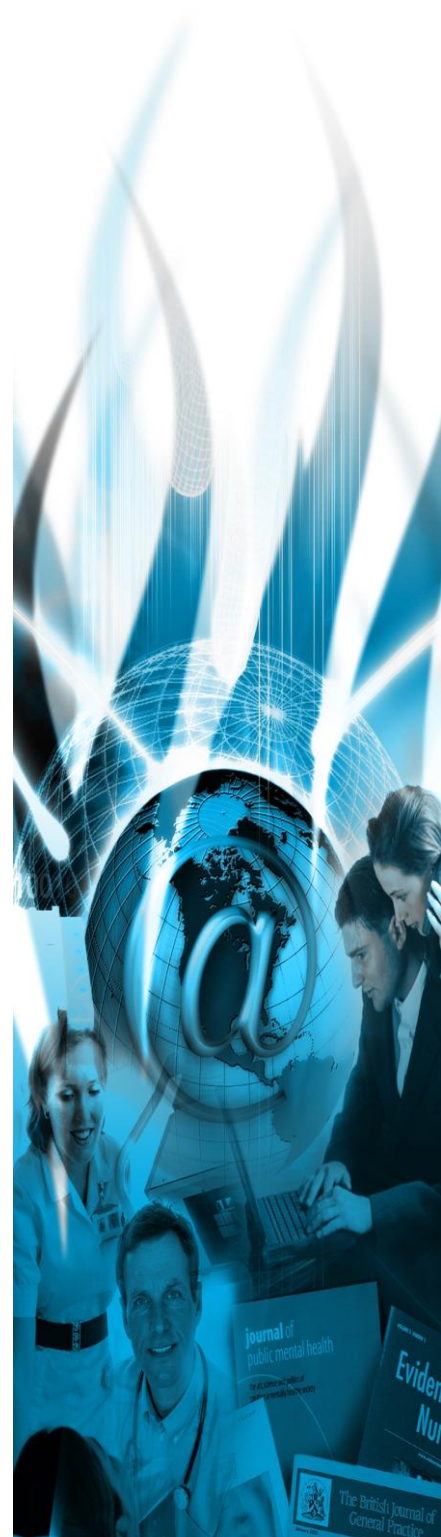
Erectile Dysfunction

Erectile dysfunction - primary care (Map of Medicine)

<http://app.mapofmedicine.com/mom/58/page.html?department-id=8&specialty-id=1038&pathway-id=708&page-id=709&history=clear>

Guidelines on male sexual dysfunction: erectile dysfunction and premature ejaculation

<http://www.uroweb.org/gls/pdf/Male%20Sexual%20Dysfunction%202010.pdf>



BSSM ED Management Guidelines 2007

http://www.bssm.org.uk/downloads/BSSM_ED_Management_Guidelines_2007.pdf

The relationship between erectile dysfunction and open urethroplasty: a systematic review and meta-analysis

<http://www.crd.york.ac.uk/crdweb/ShowRecord.asp?LinkFrom=OAI&ID=12013025175>

Erectile dysfunction in the cardiovascular patient

<http://eurheartj.oxfordjournals.org/content/early/2013/04/23/eurheartj.eht112.abstract>

Chlamydia Screening

Home-based chlamydia and gonorrhoea screening: a systematic review of strategies and outcomes <http://www.biomedcentral.com/1471-2458/13/189>

Guidelines from the National Chlamydia Screening Programme

<http://www.chlamydia-screening.nhs.uk/ps/resources.asp>

Andrology

CG156 Fertility: NICE guideline

<http://www.nice.org.uk/nicemedia/live/14078/62769/62769.pdf>

If you would like copies of any of the documents listed in this bulletin or further information on any of the topics covered please contact:

Library & Knowledge Service
The Rotherham Foundation Trust
Oak House

Tel: 01709 302096

E-mail: knowledge.service@rothgen.nhs.uk

Web: <http://www.therotherhamft.nhs.uk/KnowledgeServiceOakHouse>

